



ATHENS
iLRN 2026
GREECE

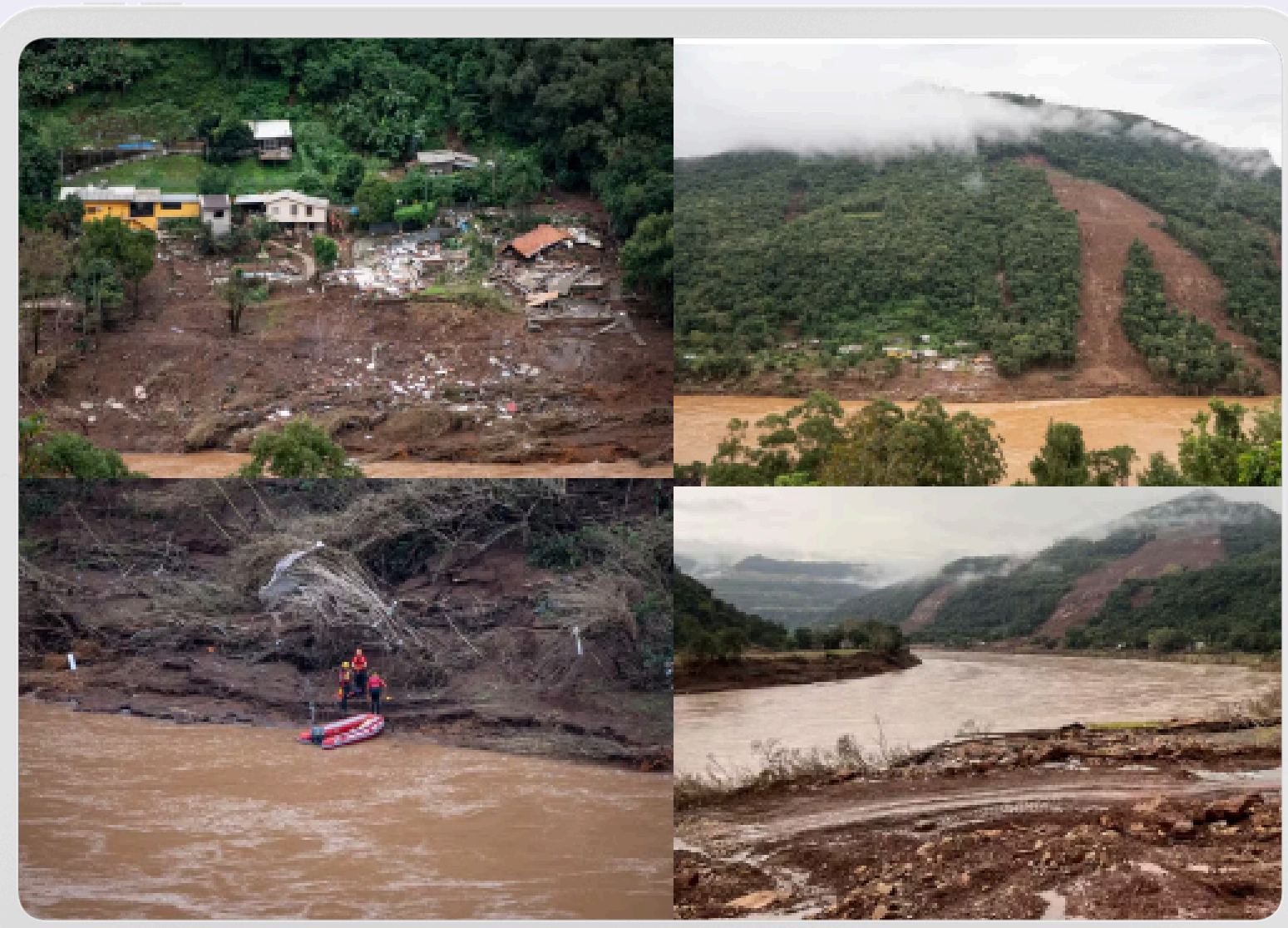


Co-creation of the "Memorial of the 2024 Flood in Rio Grande do Sul": Metaverse as a Space of Human and Non-Human Memory

Natália Sitnievski and Eliane Schlemmer
University of Vale do Rio dos Sinos, São Leopoldo, Brazil
sitnievski46@gmail.com; elianeschlemmer@gmail.com

Introduction

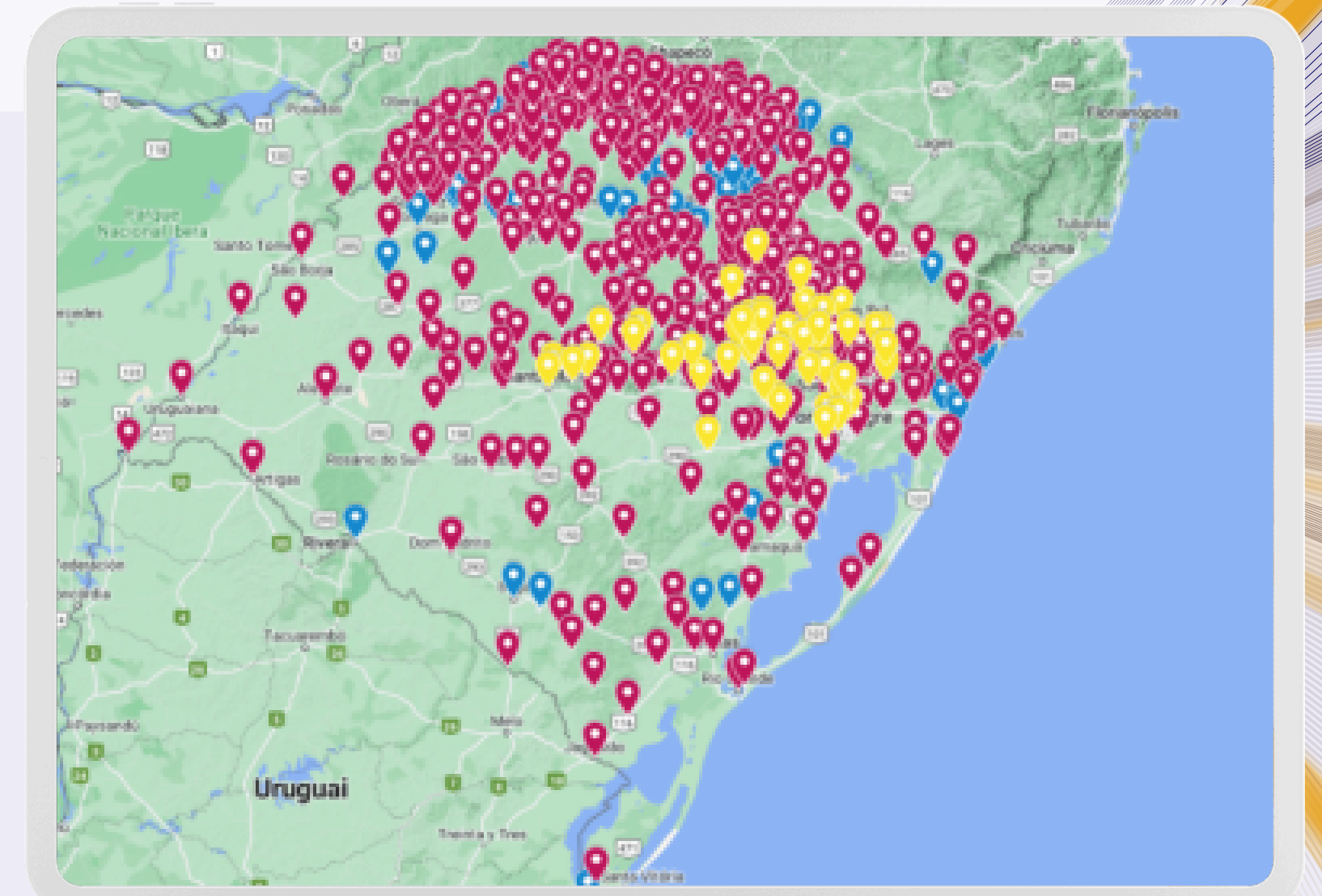
The 2024 flood in Rio Grande do Sul, Brazil, became one of the most significant climate disasters in the state's recent history, affecting millions of people and leaving profound marks on territories, landscapes, infrastructures, and collective memories. Beyond material destruction, the catastrophe also produced human and non-human memories inscribed in rivers, vegetation, urban spaces, and affects. In this context, this study aimed to co-create a digital memorial in the Spatial.io Metaverse, entitled "**Memorial of the 2024 Flood in Rio Grande do Sul**", developed with high school students participating in the Time to Lead – Humanities project at a private school in Bento Gonçalves (RS), Brazil. Grounded in the OnLIFE Education Paradigm and ecological-connective perspectives, the project sought to understand the metaverse as a living environment for memory preservation, co-creation, and collective sense-making.



Consequences of the flood in Bento Gonçalves. Source: G1 Globo (2024).

Objective

To recover and preserve human and non-human memories of the 2024 flood in Rio Grande do Sul through the co-creation of an immersive memorial in the Spatial.io Metaverse.



Dimension of the tragedy that occurred in Rio Grande do Sul. Source: CNN Brazil (2024).

Theoretical Intercessors

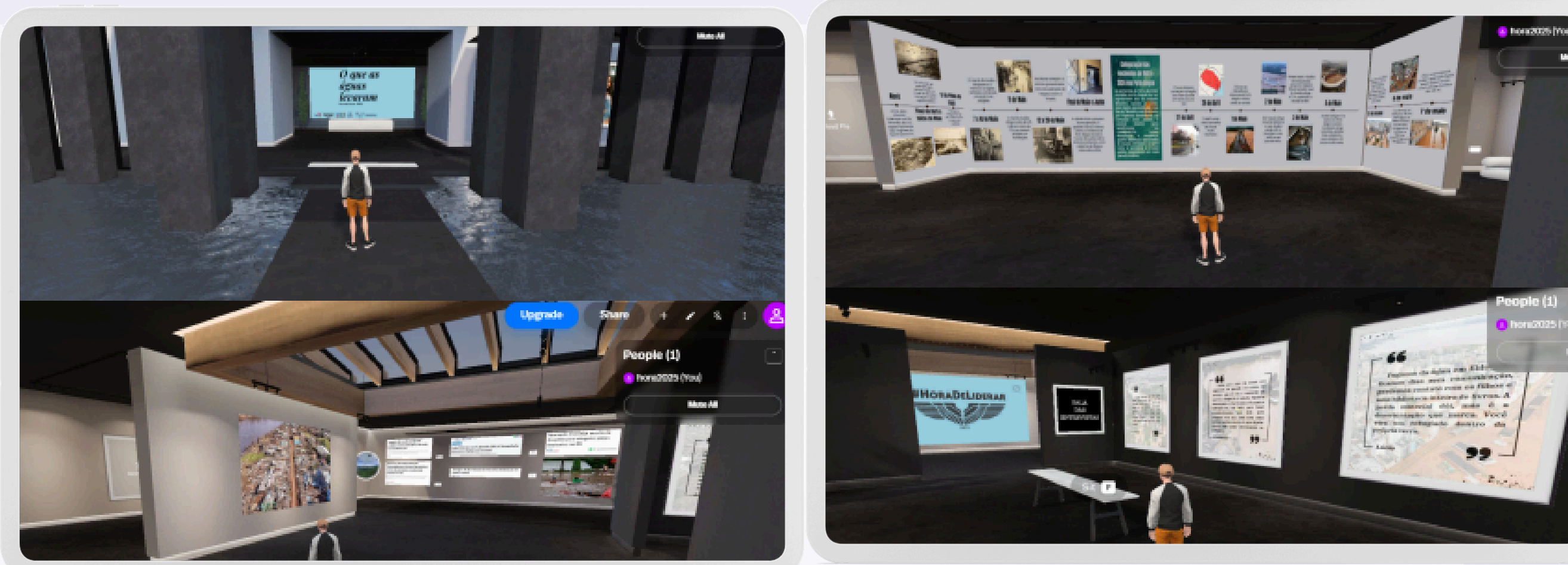
This study is grounded in the concepts of **immersion** (Murray, 2003; Morgado, 2022), **cybercity** (Ribeiro, 2020), **mesh** (Morton, 2023), **hyperhistory** (Florida, 2014), **memory** (Le Goff, 2013).

Methodology

The research was developed through the **Cartographic Intervention Research Method** (Passos, Kastrup, & Escóssia), which understands knowledge as something produced throughout the investigative process. The study involved interviews, field visits, weekly meetings, and the collaborative co-creation of the memorial in the Spatial.io metaverse between March and October 2025. Grounded in an ecological-connective perspective, the process articulated students, researchers, digital technologies, Artificial Intelligence, territory, and biodiversity, understanding research as an act of inhabiting and transforming reality.

Results

The results highlight the metaverse's potential as an immersive space for preserving human and non-human memories through collective co-creation. The experience also promoted ecological-connective learning.



[Memorial of the 2024 Flood in Rio Grande do Sul](#)

Conclusion

The project demonstrated that the metaverse can become a living space for memory and collective reconstruction. Furthermore, it highlighted the potential of connective ecologies and immersive co-creation for learning and preserving human and non-human experiences.